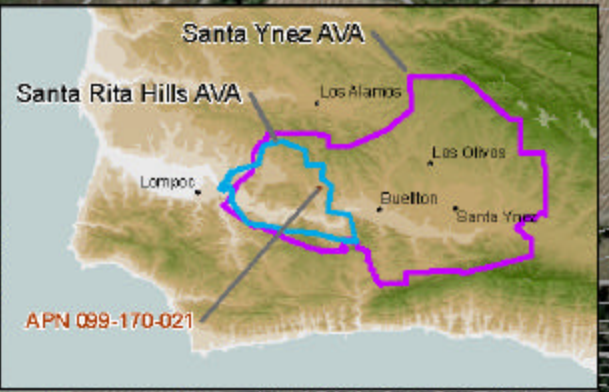
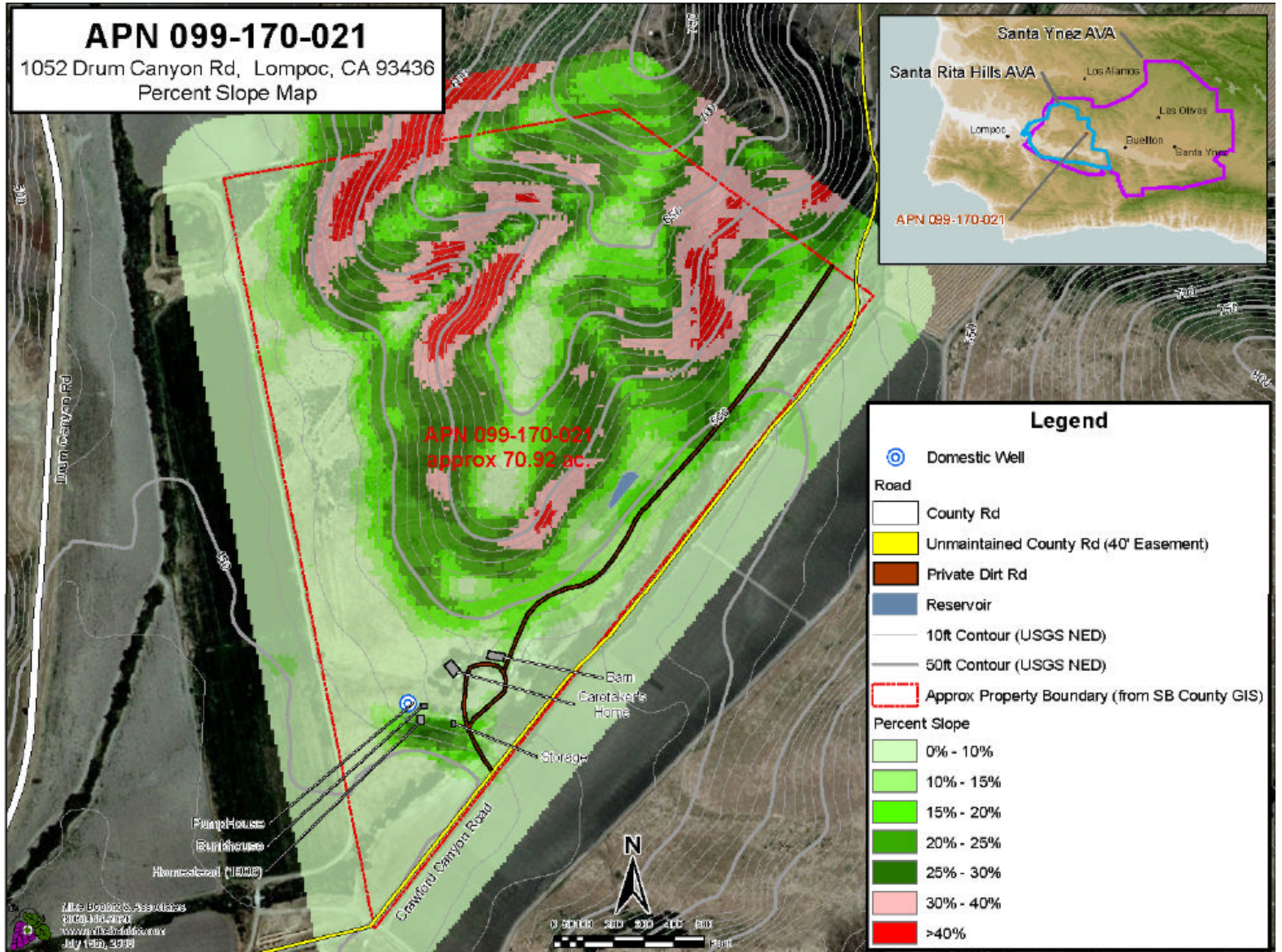


APN 099-170-021

1052 Drum Canyon Rd, Lompoc, CA 93436
Percent Slope Map



Legend

- Domestic Well
- Road**
 - County Rd
 - Unmaintained County Rd (40' Easement)
 - Private Dirt Rd
 - Reservoir
 - 10ft Contour (USGS NED)
 - 50ft Contour (USGS NED)
 - Approx Property Boundary (from SB County GIS)
- Percent Slope**
 - 0% - 10%
 - 10% - 15%
 - 15% - 20%
 - 20% - 25%
 - 25% - 30%
 - 30% - 40%
 - >40%